

**Thato Molefe**

084 038 7152
thato@remax-
advantage.co.za

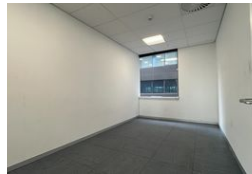
Contact RE/MAX-Advantage
(Rosebank)

011 4476763

247 Jan Smuts Avenue, Dunkeld West 2196



Web Ref RADV-14573



R pm



0



0

Commercial Property To Rent in Rosebank, Johannesburg

We are pleased to offer an exceptional opportunity to lease a premium office space situated in the heart of Rosebank. Located on the first floor of the prestigious Rosebank Towers, this expansive 718m² office space is available for immediate occupancy.

Ideally positioned, this prime location provides unparalleled convenience, with a vibrant selection of shops and easy access to public transport options. Whether your team commutes daily or your clients are visiting, the centrality of this location ensures seamless connectivity and accessibility.

The office space is thoughtfully designed to meet the needs of modern businesses, featuring a stylish and flexible layout that can be customized to accommodate your specific requirements. Additionally, tenants will benefit from a coffee shop within the complex, offering...

Features

Zoning Commercial

Sizes

Floor Size	718m ²
Land Size	718m ²