

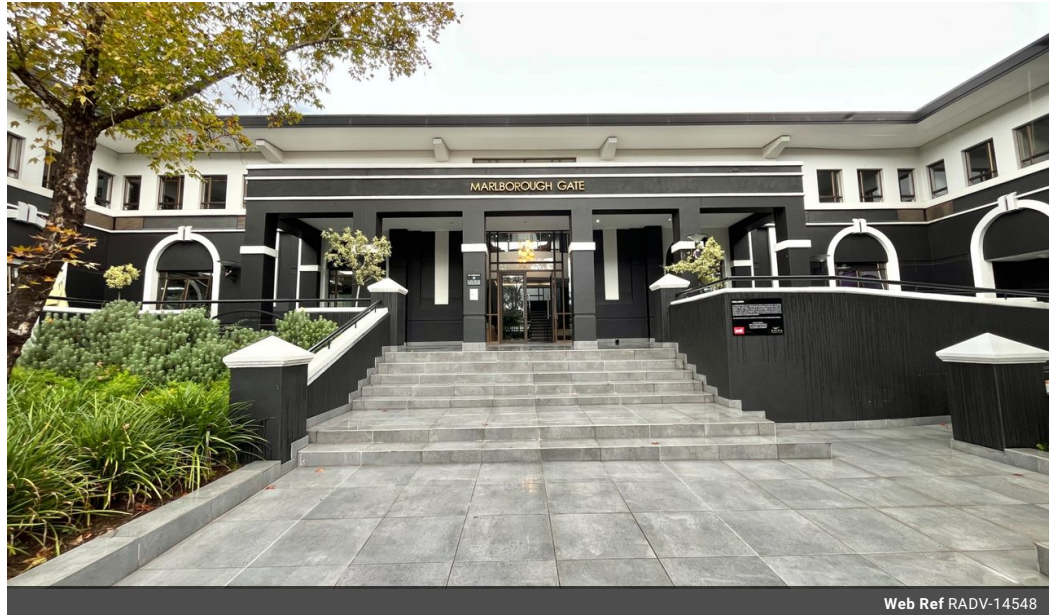


Kate Shimwell
082 493 0273
kate@remax-
advantage.co.za

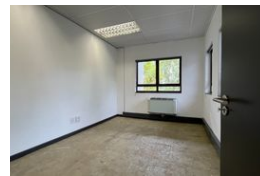
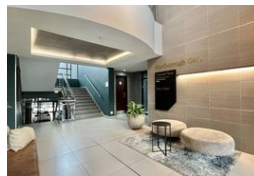
Contact RE/MAX-Advantage
(Rosebank)

011 4476763

247 Jan Smuts Avenue, Dunkeld West 2196



Web Ref RADV-14548



R53,410 pm

Gross Monthly Rental R53,410 Excl. VAT

 0  0

Commercial Property To Rent in Hyde Park, Sandton

This open-plan office features a spacious layout, including a large kitchen area equipped with ample fitted cupboards for storage. The premises also include a well-defined "pouze" area, offering additional versatility. The reception area is generously sized, providing a welcoming space for visitors.

In addition, there is a meeting/boardroom capable of seating 8 to 10 people, making it ideal for conferences and discussions. The office further benefits from six separate air-conditioned offices.

Features

Zoning Commercial

Sizes

Floor Size	449m²
Land Size	449m²