



Mpilo Ntombela
0793868100
mpilo@remax-
advantage.co.za



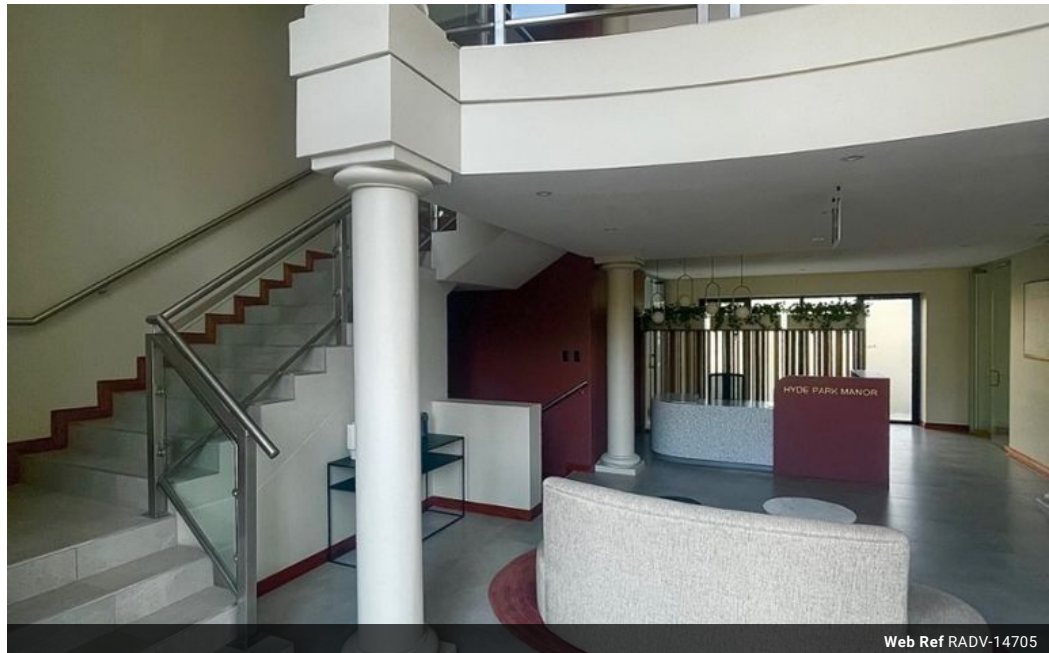
Amahle Zibula
0760379837

amahle@remax-advantage.co.za

Contact RE/MAX-Advantage
(Rosebank)

011 4476763

247 Jan Smuts Avenue, Dunkeld West 2196



Web Ref RADV-14705



R pm

0 0

Commercial Property To Rent in Hyde Park, Sandton

Prime location with easy access to the M1 highway, Winnie Mandela Drive, and Jan Smuts Avenue. Sandton, Illovo, Rosebank, and Bryanston all within a 5 km radius.

Key features:

-±1,927m² Stand-alone office building

-Fully fitted two-storey office building with elegant glass doors and railings

-Expansive balconies offering serene treetop and greenbelt views

Features

Zoning Commercial

Sizes

Floor Size 1,927m²