

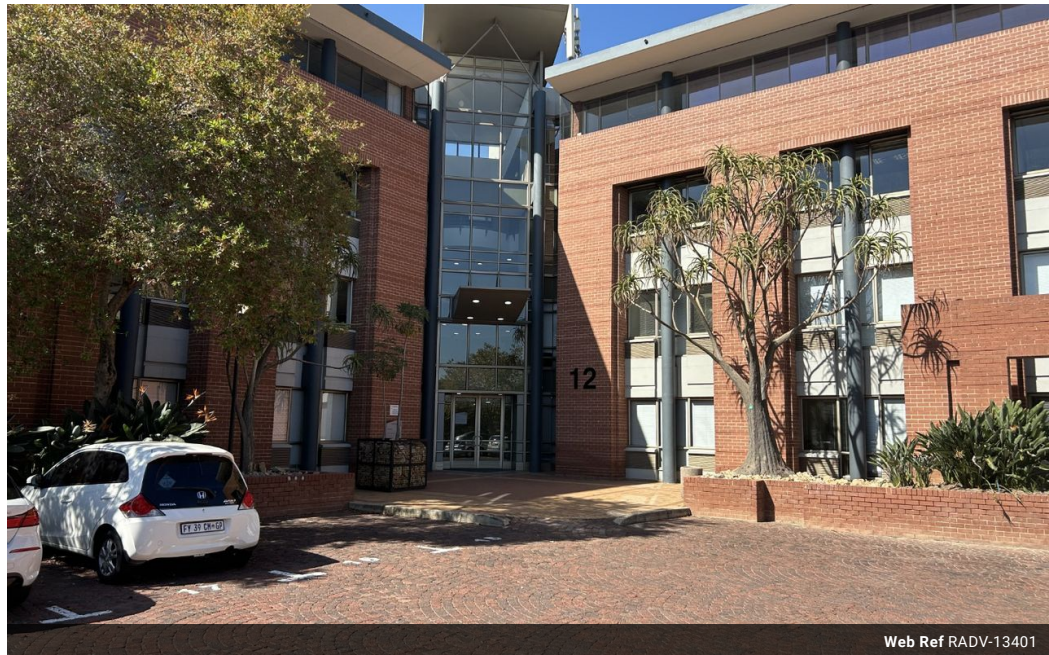


Rainer Schulz
083 777 3745
rainer@remax-
advantage.co.za

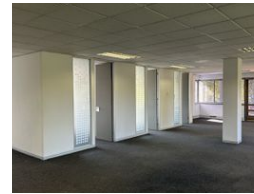
Contact RE/MAX-Advantage
(Rosebank)

011 4476763

247 Jan Smuts Avenue, Dunkeld West 2196



Web Ref RADV-13401



R pm

0 0

Commercial Property To Rent in Woodmead, Sandton

The premises are located on the second floor of Building 12 in The Woodlands Office Park. The premises have a mix of open plan areas and individual offices as well as meeting rooms.

There is a mix of basement, covered and open bays allocated to the premises at a ratio of 4 bays per 100 square metres.

Woodlands Office Park is in close proximity to numerous shops and retailers within the Woodmead node and offers easy access to both the N1 and M1 Highways and is located on bus routes. In addition there is a dedicated Gautrain shuttle service for the office park.

Woodlands Office Park is an A-Grade Office park set in a 43-hectare game park with an abundance...

Features

Zoning Commercial

Sizes
Floor Size 1,266m²