

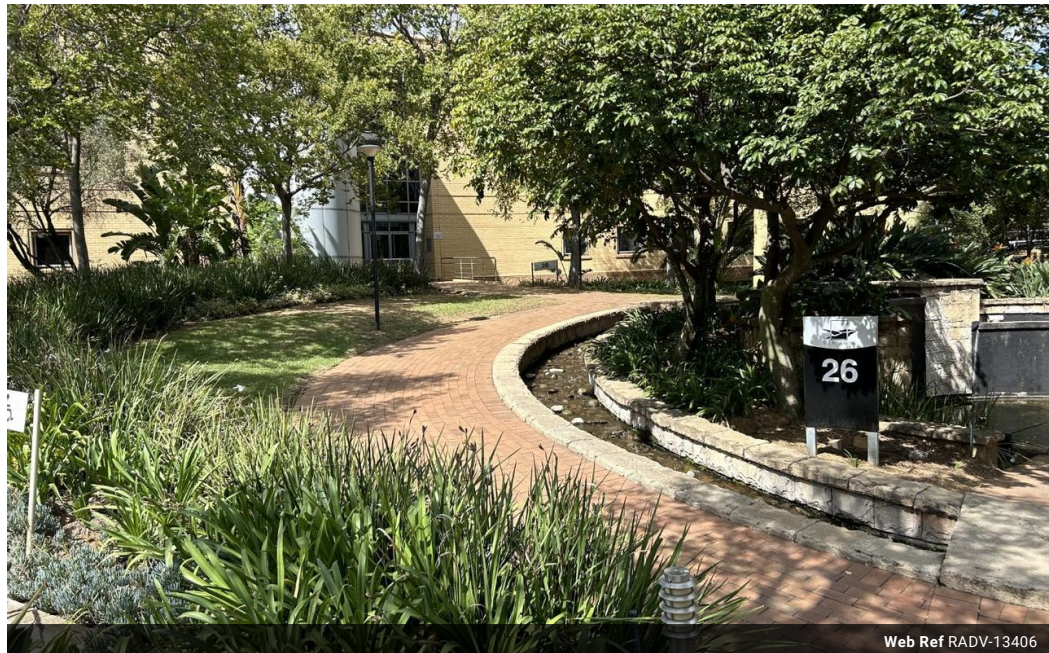


Rainer Schulz
083 777 3745
rainer@remax-
advantage.co.za

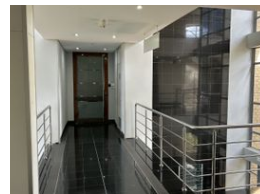
Contact RE/MAX-Advantage
(Rosebank)

011 4476763

247 Jan Smuts Avenue, Dunkeld West 2196



Web Ref RADV-13406



R pm

0 0

Commercial Property To Rent in Woodmead, Sandton

The premises are located on the first floor of Building 26 in The Woodlands Office Park and comprise a mix of individual offices, open plan areas and meeting rooms with a view out into the game park and out over the Sandton skyline.

There is a mix of basement, covered and open bays allocated to the premises at a ratio of 4 bays per 100 square metres.

Woodlands Office Park is an A-Grade Office park set in a 43-hectare game park with an abundance of bird life as well as some game, in a leafy & tranquil outdoor environment for staff and visitors to use for breaks. There is also a large entertainment Boma for corporate functions and events. The office park has it's own Lifestyle Centre providing...

Features

Zoning Commercial

Sizes

Floor Size 375m²