



Meg Dysse
068 6050464
meg@remax-
advantage.co.za



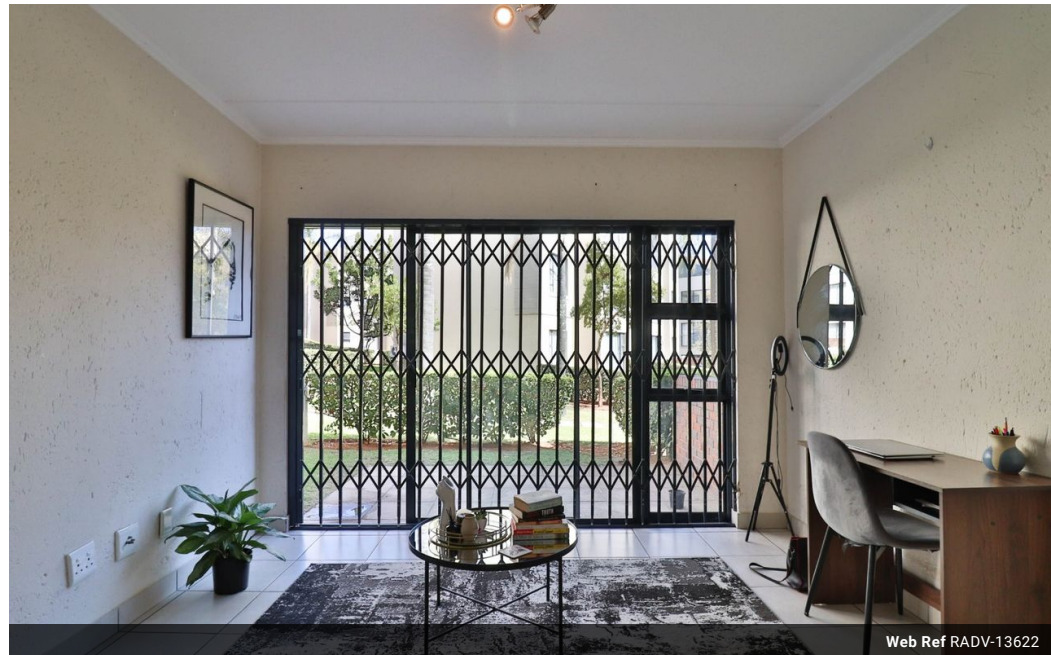
Seethan Padiachey
0686249365

seethan@remax-advantage.co.za

Contact RE/MAX-Advantage
(Rosebank)

011 4476763

247 Jan Smuts Avenue, Dunkeld West 2196



Web Ref RADV-13622



R697,000



Monthly Bond Repayment R7,076.15

Calculated over 20 years at 10.75% with no deposit.

Transfer Costs R23,730.00 **Bond Costs** R17,680.00

These calculations are only a guide. Please ask your conveyancer for exact calculations.

Monthly Levy R1,100 **Monthly Rates** R560

Apartment / Flat For Sale in Beverley, Sandton

Charming 1-Bedroom Apartment in Prime Beverly/Lonehill Location

Introducing a modern and classy 1-bedroom ground floor apartment nestled within the secure estate of Ihita in Beverley. This exquisite 48m² apartment boasts contemporary design and elegance, offering an ideal living space for those seeking comfort and style.

Interior Features:

- Living Space: Spacious 1-bedroom layout designed for relaxation and comfort.

Features

Interior

Bedrooms	1
Bathrooms	1

Exterior

Pool	Yes
Views	No

Sizes

Floor Size	42m ²
------------	------------------