



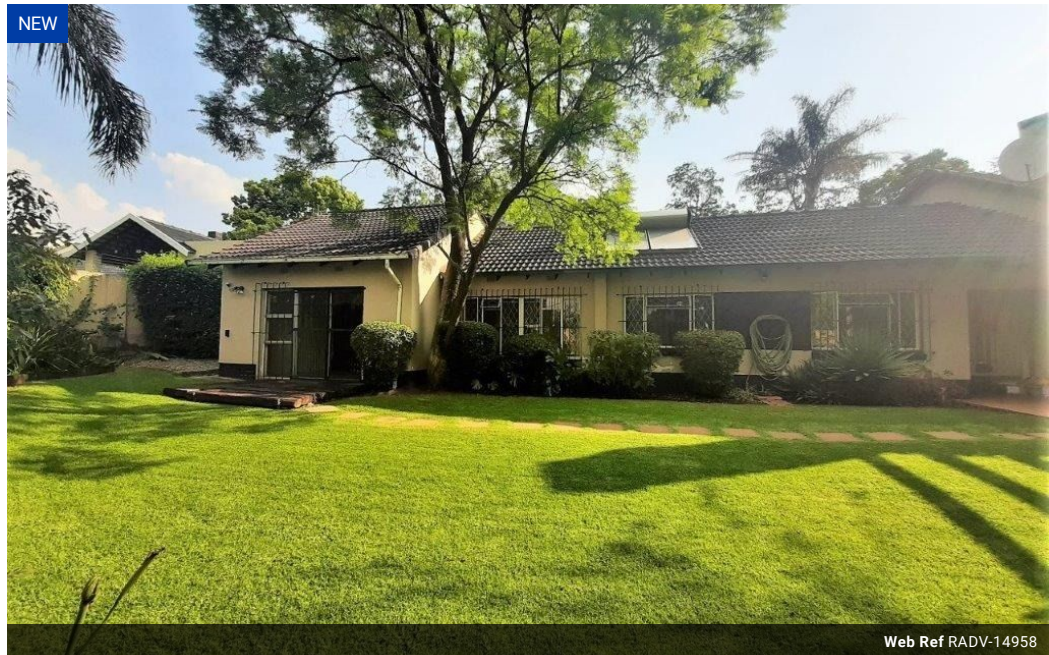
Loline Merifield
0765795543
Loline@remax-
advantage.co.za

Contact RE/MAX-Advantage
(Rosebank)

011 4476763

247 Jan Smuts Avenue, Dunkeld West 2196

NEW



Web Ref RADV-14958



R18,500 pm

Lease Period None Availability None Deposit - Annual Escalation -

 4  2  1

House To Rent in Parkmore, Sandton

Need to find your feet in Johannesburg, this home at this price is a good option to base your family in and discover life in and around Sandton's CBD. The homes' location is ideally situated minutes from various sought-after schools. With easy access to neighboring suburbs Morningside; Rivonia; Bryanston; Sandton CBD, Hyde Park; Rosebank; Melrose Arch...

Set in the lovely community-based suburb of Parkmore, managed and patrolled by 24/7, and the PCA – Parkmore Community Association.

A short walk to the Parkmore Shopping Centre – offering a great family Kwik Spar and its friendly offerings, Dischem and Delfino's. Field and Study offer a monthly market with a great vibe for the whole family.

3 BEDROOM FAMILY HOME PLUS A SPARIOUS...

Features

Pets Allowed	Yes		
Interior		Exterior	
Bedrooms	4	Garages	1
Bathrooms	2	Pool	No
Kitchens	1	Views	No
Recep. Rooms	3		